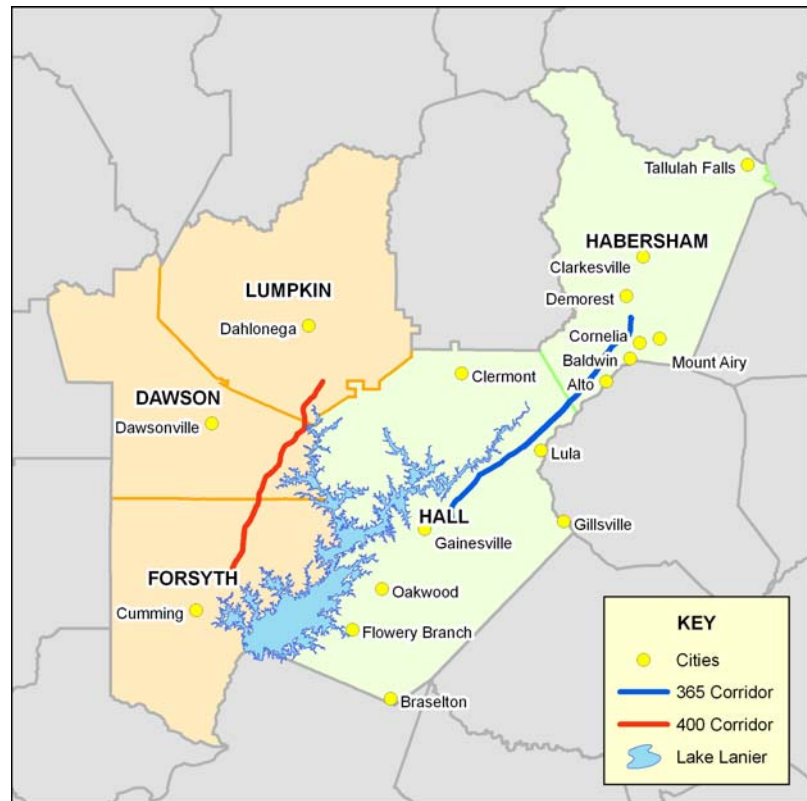




# Georgia Department of Transportation SR 400 and SR 365 Corridor Studies Fact Sheet

## What are the SR 400 and SR 365 Corridor Studies?

The Georgia Department of Transportation (GDOT) has selected ARCADIS, a consultant firm, to assist in the analysis of the existing transportation conditions, operations, limited access potential and an assessment of the future transportation needs of the SR 400 and SR 365 corridors. This comprehensive study will result in the identification and prioritization of projects along the SR 400 and SR 365 corridors to address safety, congestion, mobility enhancement and the economic development potential of the corridors through the proactive use of community involvement and technical analysis.



## What are the study areas?



The SR 400 corridor is located within Dawson, Forsyth and Lumpkin Counties and begins at SR 306/Keith Bridge Road in the City of Cumming and continues to SR 60, which extends into the City of Dahlonega.

The SR 365 Corridor is located within Hall and Habersham Counties and begins where I-985 ends at SR 369/Jesse Jewell Parkway in the City of Gainesville and continues to Demorest-Mt. Airy Road, just beyond US 441, east of the City of Demorest.



## ***What is the status?***

The study began in February 2006 and entails a 15-month process which is anticipated to be completed in May 2007. The study team is currently in the process of gathering data to document existing conditions within the corridors. The data collection will include traffic counts, land use information and an origin-destination roadside survey.

## ***How can I Participate in the decision making process?***

Cooperation with those who work, live and travel within the study area is essential to the success of these corridor studies. Our public involvement plan includes a variety of opportunities for the public to participate in this study. Two public open house meetings will be held for each corridor to allow citizens to learn about the study, ask questions and provide comments. The first meeting will explain the study and our objectives. Input from this meeting will be used to provide insight into the issues and opportunities in the study area. The second open house will showcase the study findings and initial improvement recommendations. Public comments received relative to this meeting will be used to help refine and prioritize transportation project recommendations. Study team members, including GDOT representatives will be on hand at each meeting to address questions with attendees. In addition to the public meetings, the public can stay informed and provide comments via the study website at



<http://www.dot.state.ga.us/dot/plan-prog/planning/studies/SR400-SR365/index.shtml>

## ***How can I stay updated?***

Stay informed on the SR 400 and SR 365 Corridor Studies by checking the study website for project information and meeting announcements. You can also sign up to be placed on the mailing list by contacting staff via the contact information below. Also, please specify which corridor you are interested in (SR 400, SR 365 or both).

**SR 400 and SR 365 Corridor Studies**  
**c/o Sycamore Consulting, Inc.**  
**909 Church St.**  
**Decatur, GA 30030**  
**404-377-9147 (phone)**  
**404-377-9091 (fax)**  
**[SR400-365study@dot.state.ga.us](mailto:SR400-365study@dot.state.ga.us)**

Additional study information can be received from the Georgia DOT project manager, Mr. Jason Crane at (404) 463-0010 or [jason.crane@dot.state.ga.us](mailto:jason.crane@dot.state.ga.us).